



SCW Confidential Performance Report for XYZ Hospital

Quality Initiative: Enhanced Recovery Protocols for Colorectal Surgery

Report for the period January-December 2017

Performance Report Content

Enhanced Recovery Protocol for Colorectal Procedures

Table 1. Unadjusted postoperative length of stay, prolonged length of stay, and 30-day readmission*

	XYZ Hospital (n=)	Participating Hospitals (n=2338 from 31 facilities)	All WI Hospitals (n=4221 from 105 facilities)
Median postoperative length of stay (IQR)			
Mean postoperative length of stay (SD)			
Average probability of prolonged length of stay (%)			
Average all-cause 30-day readmission (%)			

*Patients who were transferred post-operatively or who died during the inpatient stay are removed from all length of stay and readmission calculations.

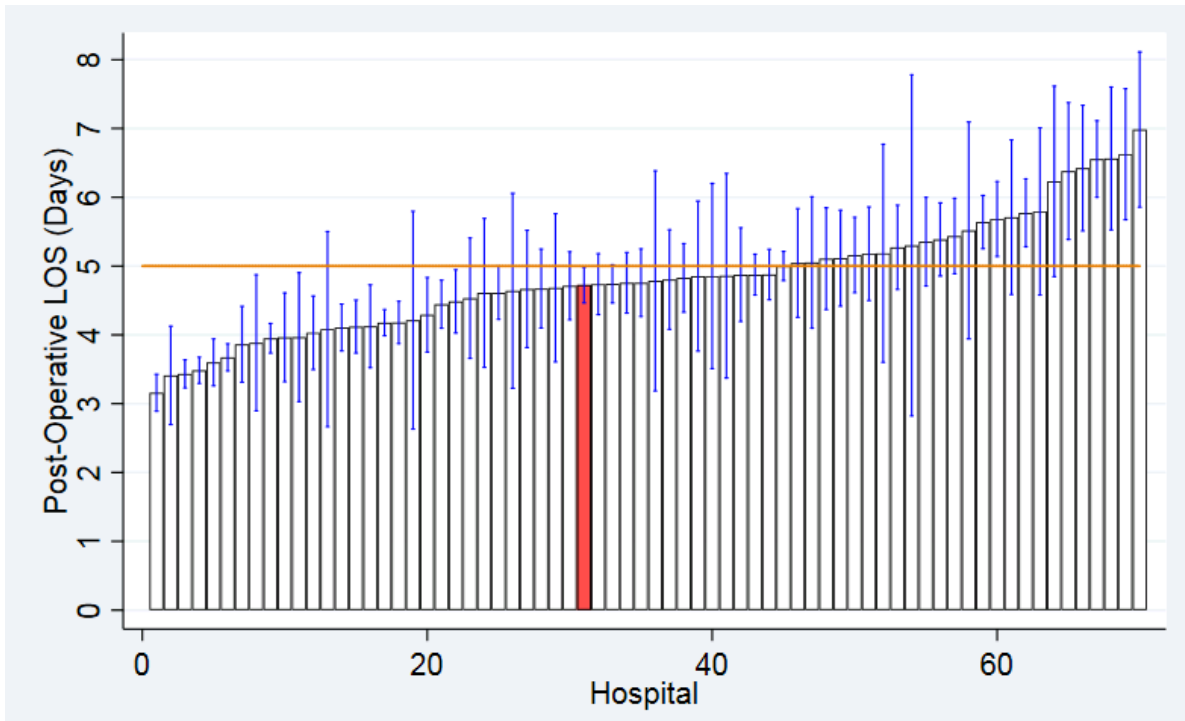
** IQR = interquartile range; SD = standard deviation

Table 2. Risk- and reliability-adjusted median postoperative length of stay, predicted probabilities of prolonged length of stay, and predicted probabilities of 30-day readmission in XYZ Hospital and SCW hospitals compared to all Wisconsin hospitals.

	Estimate (95% CI)
XYZ Hospital	
Median Length of Stay	
Average Predicted Probability of Prolonged Length of Stay (%)	
Average Predicted Probability of all cause-30 day readmission (%)	
Participating Hospitals	
Median Length of Stay	
Average Predicted Probability of Prolonged Length of Stay (%)	
Average Predicted Probability of all cause-30 day readmission (%)	

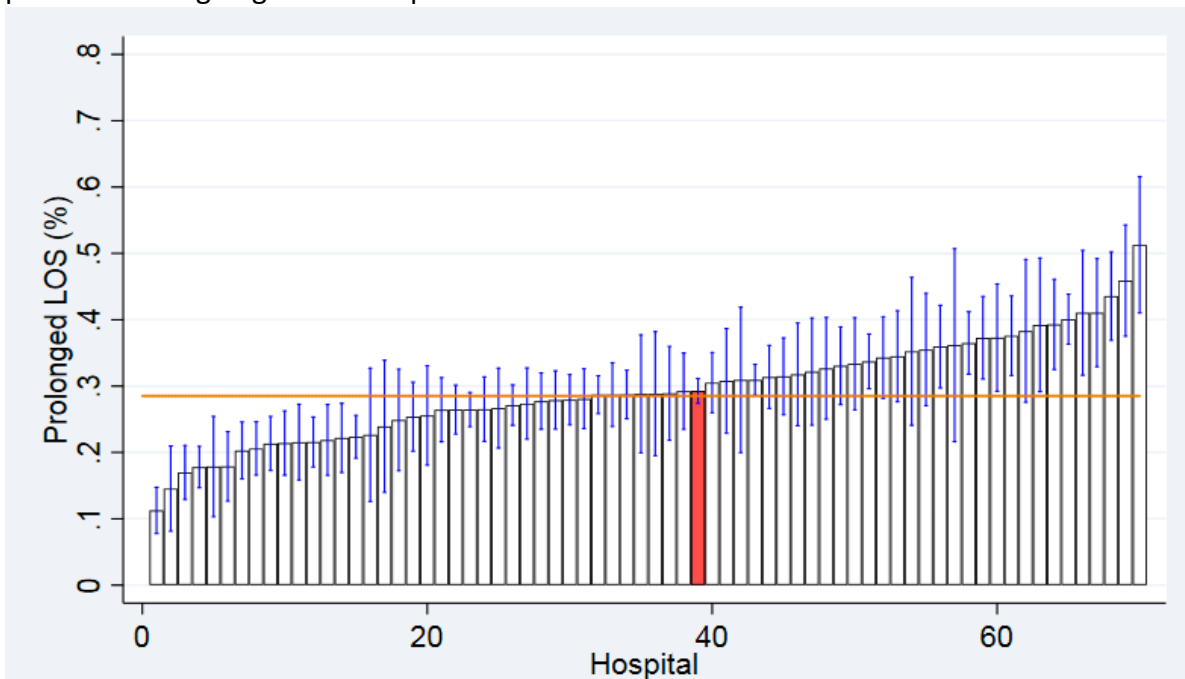
* Probability of a prolonged length of stay, adjusting for patient risk factors and hospital volume.

Figure 1. Risk and reliability adjusted median length of hospital stay following colorectal procedures in hospitals across Wisconsin.



* Statewide median length of stay is reflected by the yellow horizontal line. Each bar represents a hospital in Wisconsin. Your hospital's performance is represented by the red bar. Error bars represent confidence intervals around each hospital estimate.

Figure 2. Risk and reliability adjusted average predicted probability of a prolonged length of stay for patients undergoing colorectal procedures



* Prolonged length of stay defined as greater than the 75% percentile for patients in Wisconsin. Your hospital's performance is represented by the red bar.

Table 3. Sociodemographics and clinical characteristics (Wisconsin Hospital Association data).

	XYZ Hospital	Participating Hospitals (n=31)	All WI Hospitals (n=105)
Number of cases			
Number of hospitals performed the procedure (by facility) Colectomy Proctectomy			
Mean age (SD)			
Gender Male Female			
Admission type Elective Emergent Urgent			
Payer Private insurance Medicare Medical assistance/BadgerCare Self-pay Other government			
Discharge location Inpatient death Home Home with home health services Skilled nursing facility/rehab Transfer to another care facility			
Diagnosis category Malignant neoplasm (GI cancers) Diverticulitis Benign neoplasm Obstruction/perforation IBD Infectious enteritis/colitis/peritonitis Fistula Rectal prolapse Vascular insufficiency Hemorrhage Other			
Procedure category Left colectomy Right colectomy Total colectomy Proctectomy			

Surgical approach Open Laparoscopic			
Underwent ostomy Yes No			