



SCW Confidential Performance Report for Hospital X

Quality Initiative: Enhanced Recovery Protocols for Colorectal Surgery

Report for the period January-December 2017

Performance Report Content
Enhanced Recovery Protocol for Colorectal Procedures

Table 1. Unadjusted postoperative length of stay, prolonged length of stay, and 30-day readmission*

	Hospital X	Participating Hospitals (n=2338 from 31 facilities)	All WI Hospitals (n=4221 from 105 facilities)
Median postoperative length of stay (IQR)		5 (3–7)	5 (3–7)
Mean postoperative length of stay (SD)		5.9 (4.9)	5.9 (4.7)
Average probability of prolonged length of stay (%)		28.2	28.5
Average all-cause 30-day readmission (%)		8.0	7.7

*Patients who were transferred post-operatively or who died during the inpatient stay are removed from all length of stay and readmission calculations.

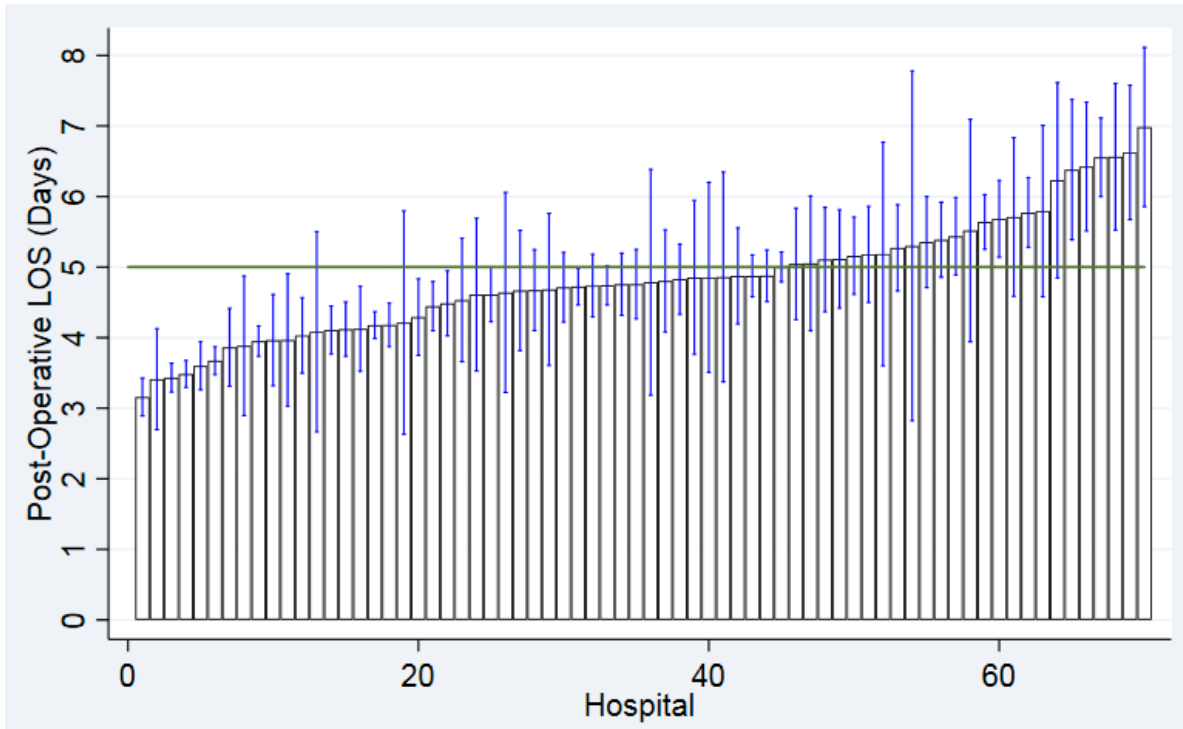
** IQR = interquartile range; SD = standard deviation

Table 2. Risk- and reliability-adjusted median postoperative length of stay, predicted probabilities of prolonged length of stay, and predicted probabilities of 30-day readmission in Hospital X and SCW hospitals.

	Estimate (95% CI)
Hospital X	
Median Length of Stay	
Average Predicted Probability of Prolonged Length of Stay (%)	
Average Predicted Probability of all cause-30 day readmission (%)	
SCW Participating Hospitals	
Median Length of Stay	4.5 (4.4 – 4.6)
Average Predicted Probability of Prolonged Length of Stay (%)	27.5 (26.7 – 28.3)
Average Predicted Probability of all cause-30 day readmission (%)	7.9 (7.7 – 8.0)

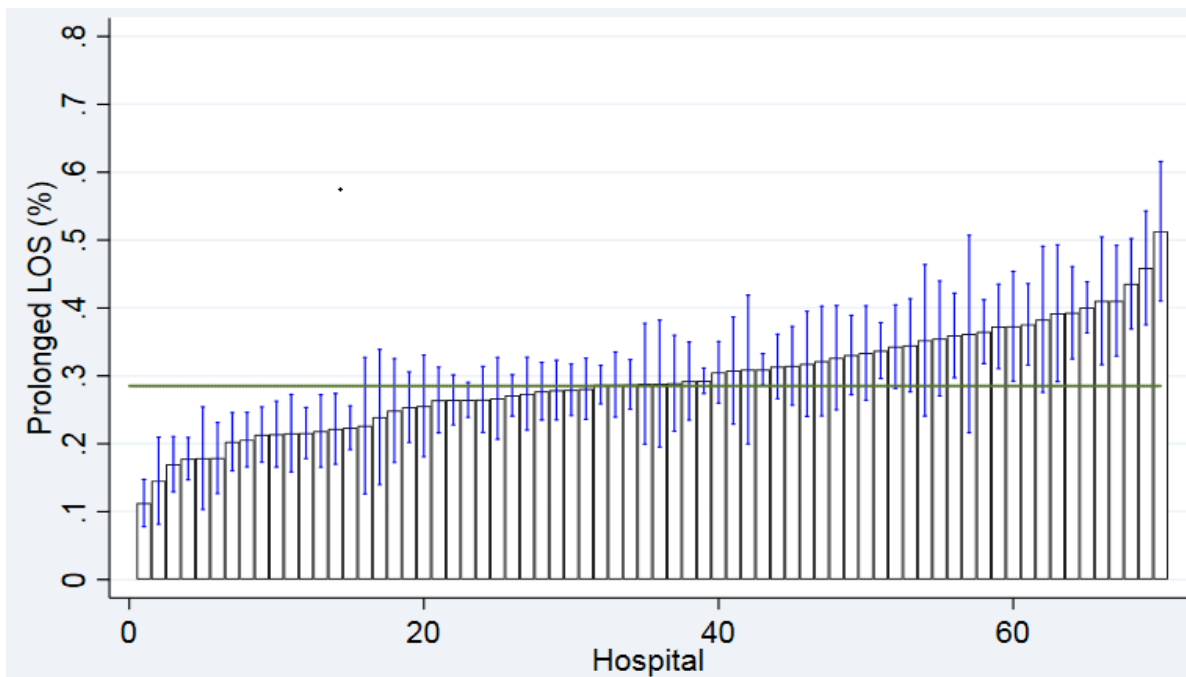
* Probability of a prolonged length of stay, adjusting for patient risk factors and hospital volume.

Figure 1. Risk and reliability adjusted median length of hospital stay following colorectal procedures in hospitals across Wisconsin.



* Statewide median length of stay is reflected by the green horizontal line. Each bar represents a hospital in Wisconsin. Error bars represent confidence intervals around each hospital estimate.

Figure 2. Risk and reliability adjusted average predicted probability of a prolonged length of stay for patients undergoing colorectal procedures



* Prolonged length of stay defined as greater than the 75% percentile for patients in Wisconsin.

Table 3. Sociodemographics and clinical characteristics (Wisconsin Hospital Association data).

	Hospital X	Participating Hospitals (n=31)	All WI Hospitals (n=105)
Number of cases		2417	4376
Number of hospitals performed the procedure (by facility)			
Colectomy		31 (100.0)	105 (100.0)
Proctectomy		20 (64.5)	46 (43.8)
Mean age (SD)		61.7 (15.0)	62.7 (14.8)
Gender			
Male		1094 (45.3)	2049 (46.8)
Female		1323 (54.7)	2327 (53.2)
Admission type			
Elective		1800 (74.5)	3122 (71.4)
Emergent		404 (16.7)	811 (18.5)
Urgent		213 (8.8)	443 (10.1)
Payer			
Private insurance		1031 (42.7)	1752 (40.0)
Medicare		1155 (47.8)	2188 (50.0)
Medical assistance/BadgerCare		179 (7.4)	342 (7.8)
Self-pay		28 (1.2)	56 (1.3)
Other government		24 (1.0)	38 (0.9)
Discharge location			
Inpatient death		37 (1.5)	58 (1.3)
Home		1621 (67.1)	3076 (70.3)
Home with home health services		502 (20.8)	697 (15.9)
Skilled nursing facility/rehab		215 (8.9)	448 (10.2)
Transfer to another care facility		42 (1.7)	97 (2.2)
Diagnosis category			
Malignant neoplasm (GI cancers)		861 (35.6)	1503 (34.3)
Diverticulitis		641 (26.5)	1214 (27.8)
Benign neoplasm		243 (10.1)	480 (11.0)
Obstruction/perforation		121 (5.0)	244 (5.6)
IBD		165 (6.8)	207 (4.7)
Infectious enteritis/colitis/peritonitis		38 (1.6)	67 (1.5)
Fistula		35 (1.5)	63 (1.4)
Rectal prolapse		31 (1.3)	52 (1.2)
Vascular insufficiency		10 (0.4)	18 (0.4)
Hemorrhage		<5	9 (0.2)
Other		271 (11.2)	519 (11.9)
Procedure category			
Left colectomy		1242 (51.4)	2366 (54.1)
Right colectomy		794 (32.9)	1519 (34.7)
Total colectomy		151 (6.3)	203 (4.6)
Proctectomy		230 (9.5)	288 (6.6)

Surgical approach			
Open		1594 (66.0)	3003 (68.6)
Laparoscopic		823 (34.1)	1373 (31.4)
Underwent ostomy			
Yes		324 (13.4)	448 (10.2)
No		2093 (86.6)	3928 (89.8)