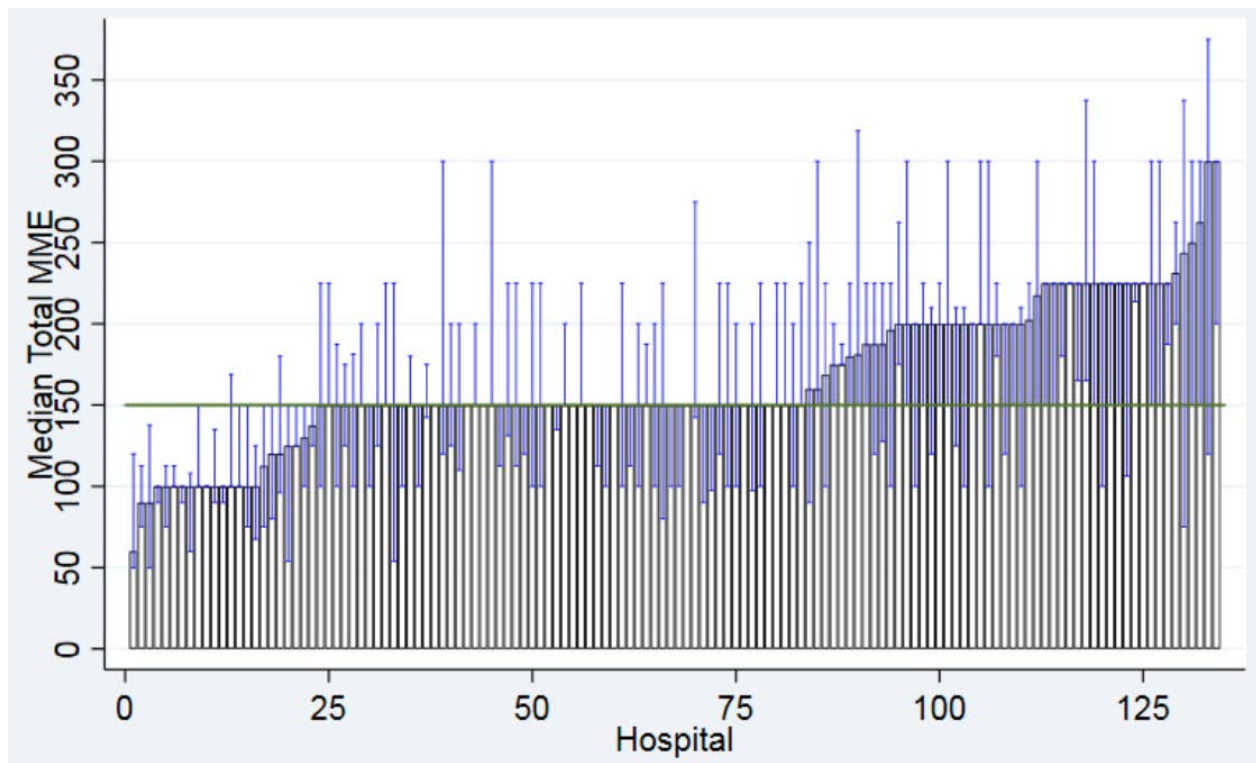




SCW Confidential Performance Report for SCW & Wisconsin Hospitals  
Quality Initiative: Reducing Postoperative Opioid Prescribing  
Reporting Period: July 1, 2016 – June 30, 2017

**Figure 1.** Unadjusted median morphine equivalent dose provided to patients following laparoscopic cholecystectomy



Horizontal line: Statewide median total morphine equivalent dose for first fill within 7 days of the index procedure. Each bar represents a hospital in Wisconsin. Error bars represent the interquartile range around each of the hospital estimates.

**Table 1.** Case volume and opioid initial fill within 7 days of laparoscopic cholecystectomy

	Opioid Prescribing Recommendation*	Hospital X	Participating Hospitals (n= 32)	All WI Hospitals (n=134 )
Number of Cases	n/a		1,693	3,986
Hydrocodone (Norco) 5 mg Tablets (Median, IQR)	15		30 (20-40)	30 (20-30)
Codeine (Tylenol #3) 30 mg Tablets (Median, IQR)	15		30 (15-30)	25 (20-30)
Tramadol 50 mg Tablets (Median, IQR)	15		30 (20-40)	30 (20-35)
Oxycodone 5 mg Tablets (Median, IQR)	10		30 (20-40)	30 (20-40)
Hydromorphone (Dilaudid) 2 mg Tablets (Median, IQR)	10		70 (20-120)	25 (18-60)

\* Prescribing recommendation taken from the Michigan Opioid Prescribing Engagement Network (OPEN)