



SCW Confidential Performance Report for Hospital X

Quality Initiative: Reducing Repeat Operations for Women with Breast Cancer

Reporting Period: January-December 2017

Reducing Repeat Operations for Women with Breast Cancer

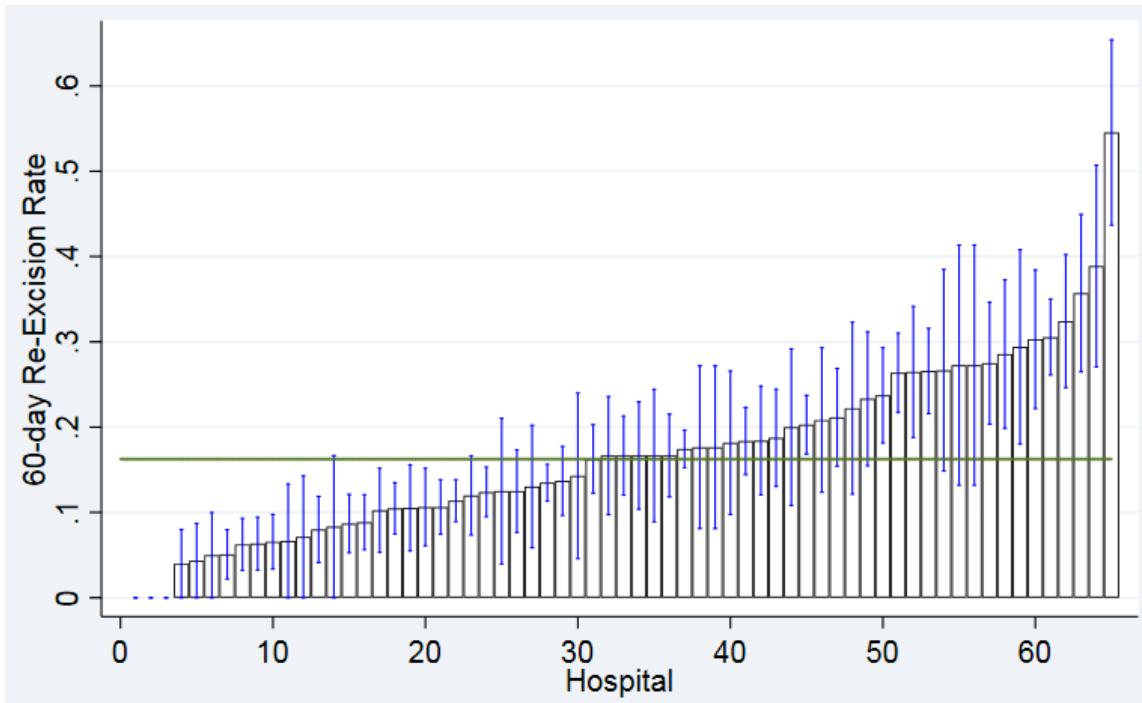
Table 1. Unadjusted and risk- and reliability adjusted re-excision and mastectomy rates

	Hospital X	Participating Hospitals (n=35)	All WI Hospitals (n=80)
60-Day Re-Excision Rate			
Unadjusted		15.1%	16.3%
Risk- and Reliability-Adjusted		15.7%	N/A
Mastectomy as First Operation			
Unadjusted		31.2%	30.5%
Risk- and Reliability Adjusted		31.3%	N/A

Table 2. Case volume, sociodemographic factors and clinical characteristics

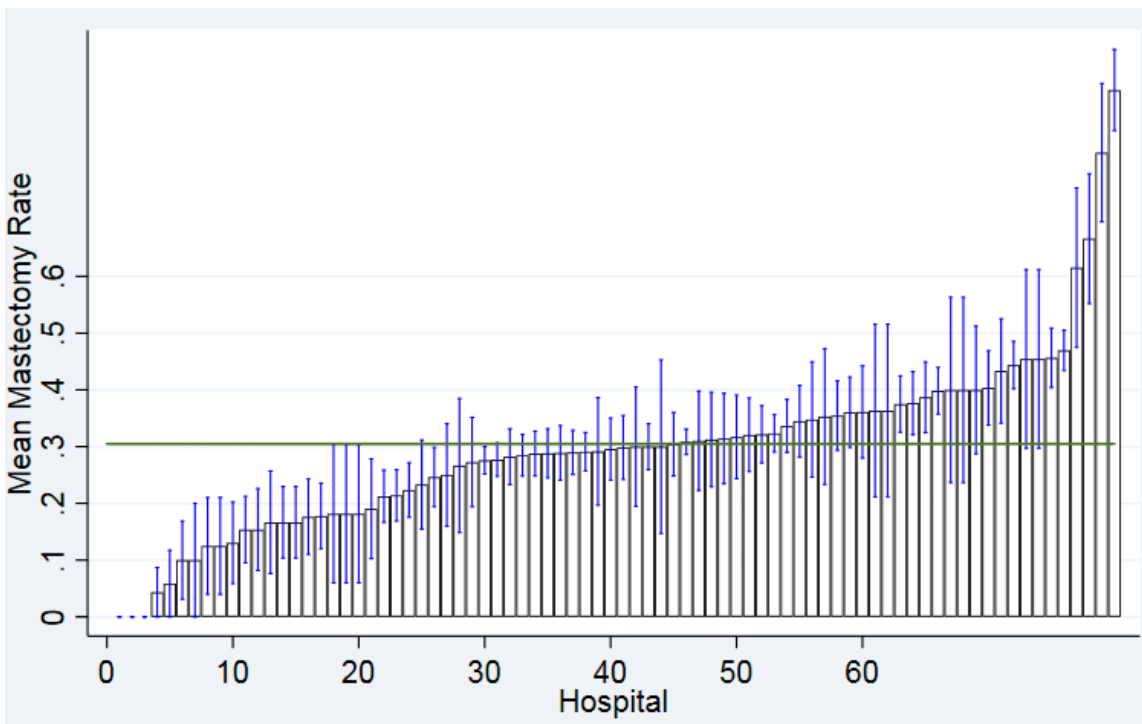
	Hospital X	Participating Hospitals (n=35)	All WI Hospitals (n=80)
Number of Index Lumpectomy Procedures		2735	3,646
Number of Mastectomy Procedures (as First Operation)		872	1,600
Number of Repeat Procedures		281	593
Mean age (SD)		62.2 (12.6)	62.7 (12.7)
Payer (%)			
Medicare		45.8	47.8
Medical assistance/Badgercare		4.9	4.9
Other Government		1.2	0.9
Private Insurance		47.2	46.2
Self Pay		0.6	0.32
Other/Unknown		0.3	0.15

Figure 1. Unadjusted hospital 60-day reoperation rates following lumpectomy



Green line: Statewide mean hospital-level re-excision rate. Each bar represents a hospital in Wisconsin. Error bars represent 95% confidence intervals around each hospital estimate.

Figure 2. Unadjusted hospital mastectomy rates



Green line: Statewide mean hospital-level re-excision rate. Each bar represents a hospital in Wisconsin. Error bars represent 95% confidence intervals around each hospital estimate.